



**DÚPLEX 1
PLANTA BAJA**

59.92 m² | S. ÚTIL CERRADA

7.73 m² | VESTÍBULO

20.79 m² | COCINA

2.16 m² | ASEO

24.81 m² | ESTAR-COMEDOR

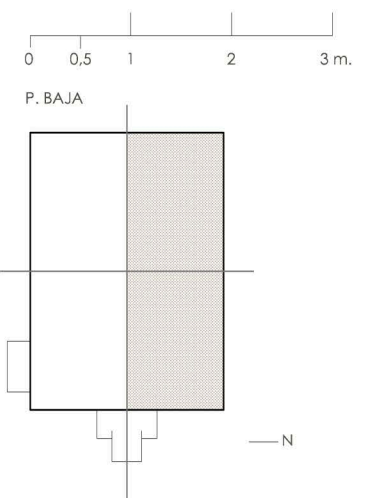
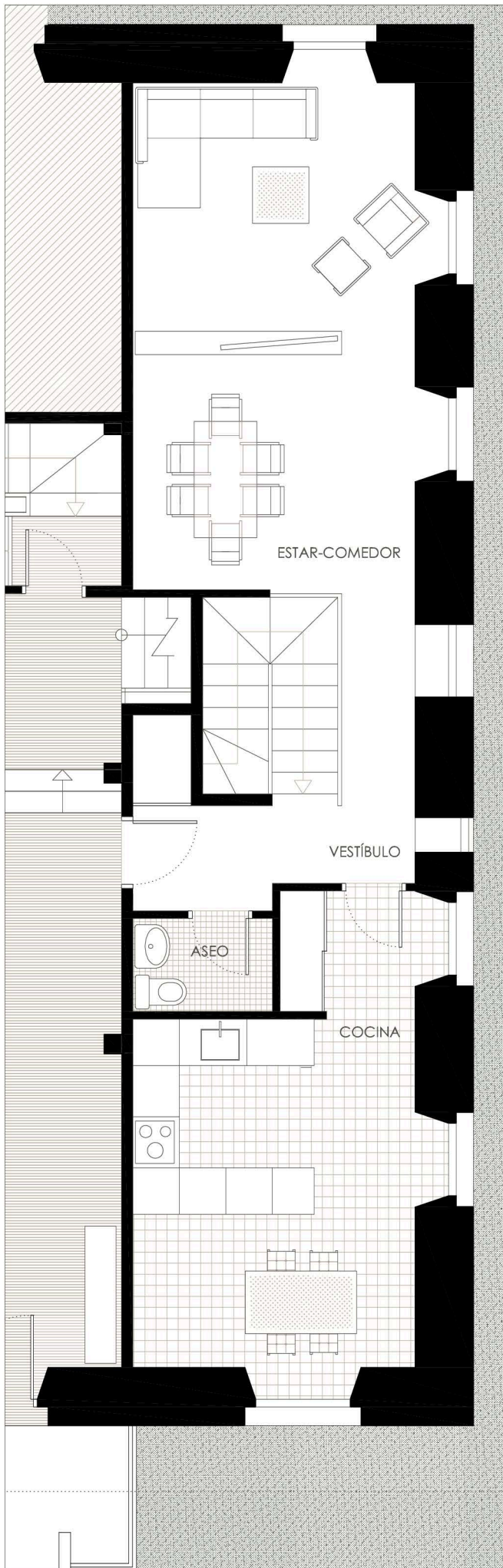
4.43 m² | ESCALERA

SUPERFICIES TOTALES

117.31 m² | S. ÚTIL CERRADA

160.44 m² | S. CONSTRUIDA

17.22 m² | TRASTERO 1





**DÚPLEX 1
PLANTA SÓTANO**

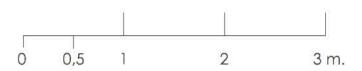
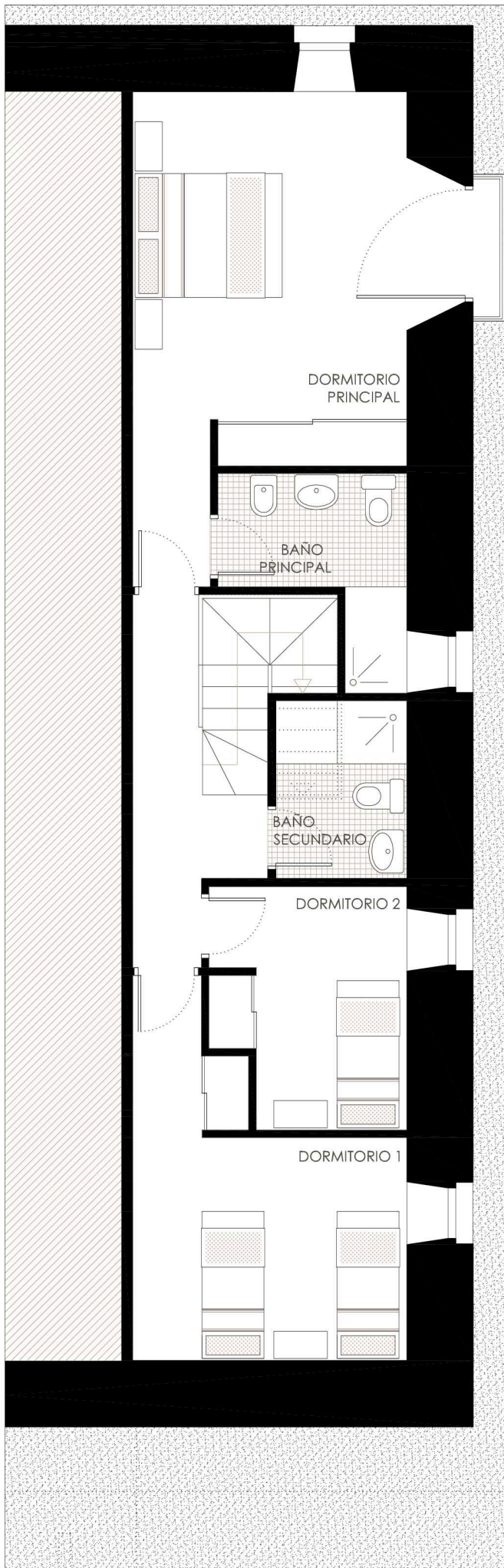
57.39 m² | S. ÚTIL CERRADA
 20.11 m² | DORMITORIO PRINCIPAL
 4.67 m² | BAÑO PRINCIPAL
 3.90 m² | BAÑO SECUNDARIO
 7.42 m² | DORMITORIO 2
 12.71 m² | DORMITORIO 1
 8.58 m² | ESCALERA

SUPERFICIES TOTALES

117.31 m² | S. ÚTIL CERRADA

160.44 m² | S. CONSTRUIDA

17.22 m² | TRASTERO 1



P. BAJA

